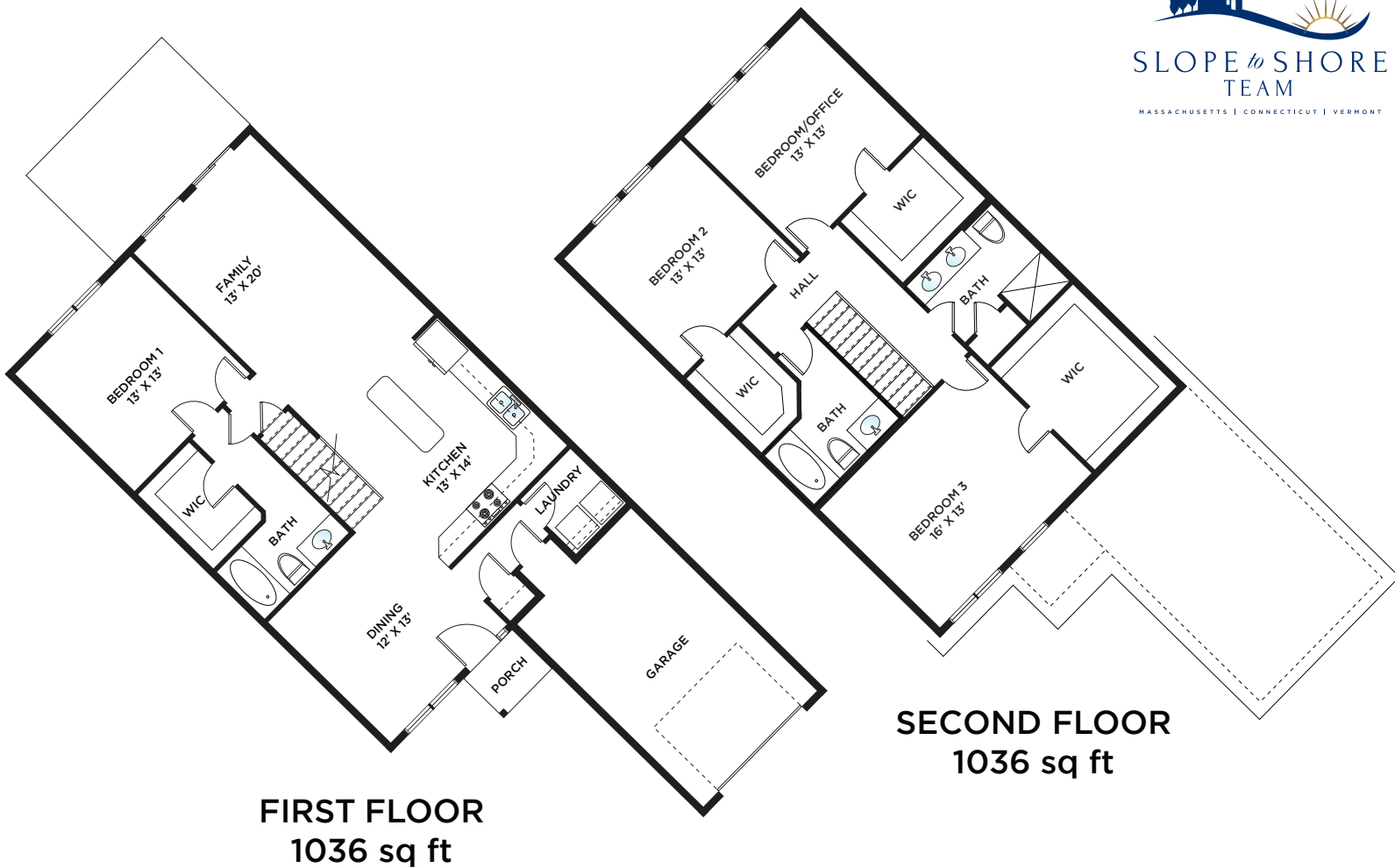


Welcome to Pond View Hollow

Four Bedroom Style – 2076 sq ft



FIRST FLOOR
1036 sq ft

SECOND FLOOR
1036 sq ft

Luxurious Features – Spacious Design

- Underground utilities with public water & sewer
- Efficient Natural gas 2 zone heat with central air conditioning
- Custom designed Kitchens and Bathrooms
- Low maintenance vinyl sided exteriors with Low E thermal tilt-in windows with integrated grilles
- Interior and exterior Smart Home features
- Custom interior trim packages

Call us Today for More Details
413.537.3186

